



IP-A1SC15

IP horn speaker



Add a
strong voice
to your system.



IP-A1SC15

Based on open standards, the IP horn speaker IP-A1SC15 plugs right into standard IP networks and can be easily integrated with your Video Management System (VMS) or SIP-based communication system using ONVIF/SIP.

The IP horn speaker broadcasts crystal clear pre-recorded voice messages or live speech announcements, manually or automatically triggered by VoIP (Voice over IP) / SIP phone systems, IP camera systems, image sensing or motion detection video systems.

The IP horn speaker is a complete stand-alone PA-system with high-quality speaker, built-in 15W power amplifier and integrated audio source for 20 pre-recorded messages. It supports Power over Ethernet (PoE+).



FEATURES

- Maximum sound pressure level is 124dB at 15W powered with PoE+
- Operating temperature is -30°C to +55°C
- IP66 (Dust/Water Protection)
- Up to 20 sound sources can be pre-recorded
- Individual volume level adjustment to each audio source



APPLICATIONS



Construction sites



Car parks







Perimeter surveillance



Shopping malls and retail centres

IP horn speaker

COMBINE VIDEO & AUDIO

Surveillance	Analyze and Detect	Manage and Record	Alert
Endpoint Device	Video Content Analysis Software	Video Management Software	IP horn speaker
			

MAXIMUM SOUND PRESSURE LEVEL OF 124 DB

Excellent sound: clear speech over long distances at a maximum sound pressure level of 124 dB. The connection of the IP horn speaker with PoE+ enables the integrated 15W amplifier to broadcast excellent sound quality at very high sound pressure level.



Access control points



CCCTV

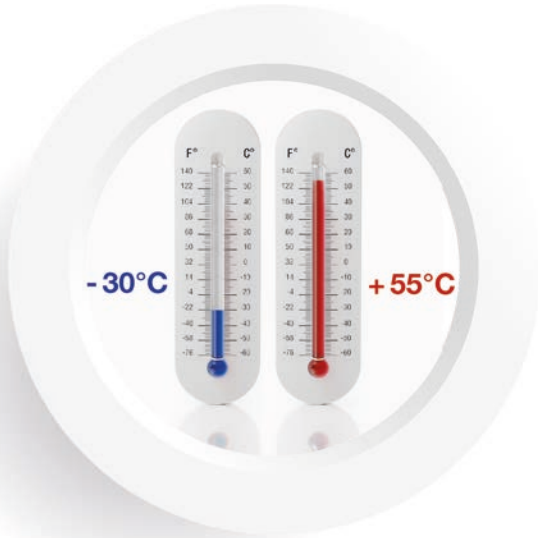


Stations



Plants and warehouses

IP-A1SC15



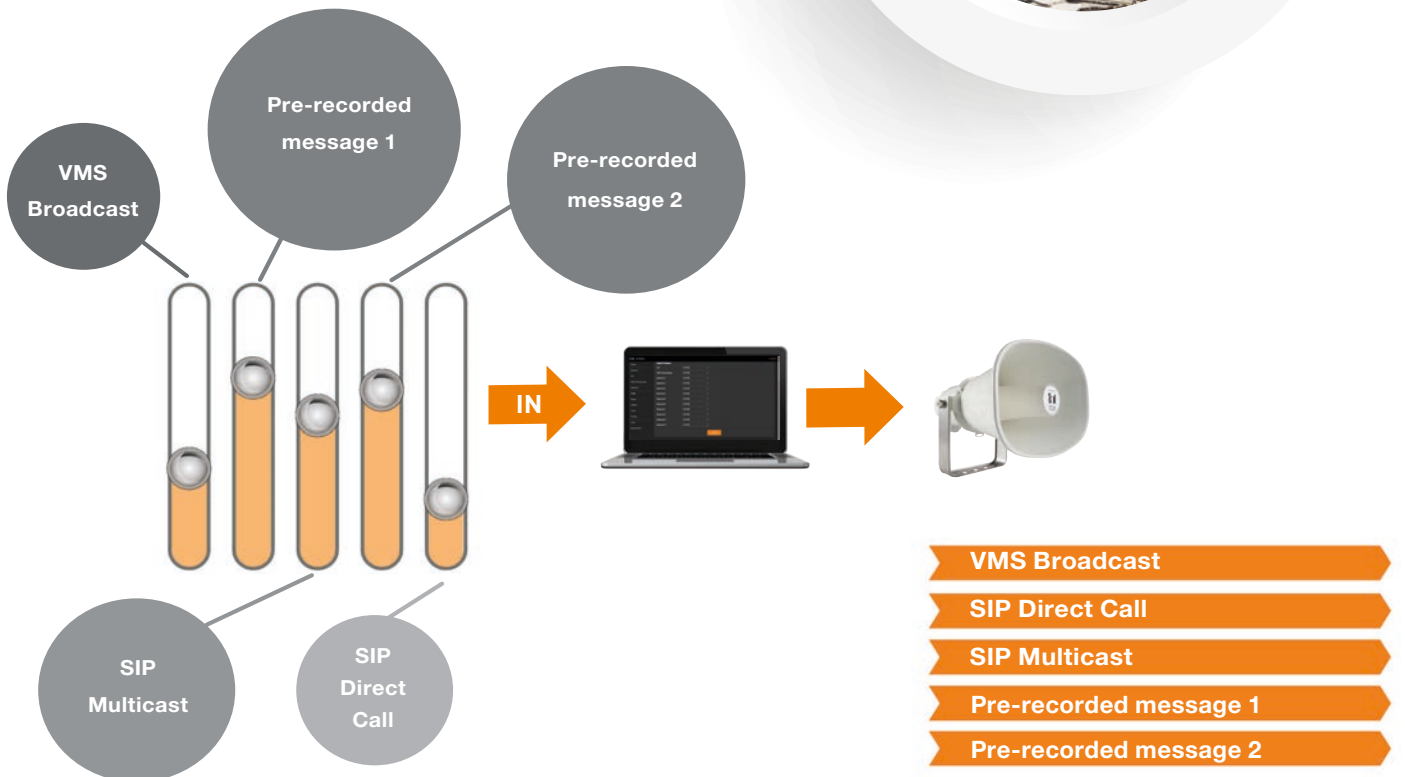
ROBUST IP66 WEATHER RESISTANT HOUSING

The IP-A1SC15 combines the proven robust construction with the latest IP technology. The IP horn speaker is weather resistant at extreme temperatures and has an IP66 protected housing.

- ▶ Operating temperature from -30 to +55 °C
- ▶ Dust / Water Protection IP66

EASY TO CUSTOMIZE OVER API

For customized solutions you can use the provided API to control the device individually. By using Browser-Line commands the speaker can be integrated into your own control program in a very simple way. Adapt the individual volume to the environmental noise level and optimize it to time, distance, and degree of emergency. The IP horn speaker offers fine volume control to increase or decrease sound volume and set different volume levels.



IP horn speaker



SIMPLE TO INSTALL WHEREVER YOU NEED A STRONG VOICE

Plug and broadcast: A single standard network cable provides both power and connectivity with your network. Based on open standards, it supports Power over Ethernet (PoE+) and plugs right into standard IP networks. The IP horn speaker can be easily integrated with your Video Management System (VMS) or SIP-based communication system.

ALL-IN-ONE STAND-ALONE NETWORK AUDIO TECHNOLOGY

The TOA horn speaker IP-A1SC15 is a complete stand-alone advanced audio system with high-quality speaker, built-in power amplifier and audio source for 20 pre-recorded messages in a single unit.



COST EFFECTIVE AND FAST REACTION

In an alert or emergency situation it can be fast and effective to use audio to respond with voice announcement instead of sending a security guard. When combined with e.g. video surveillance or motion detection systems, it allows immediate reaction with live speech announcements or pre-recorded messages.

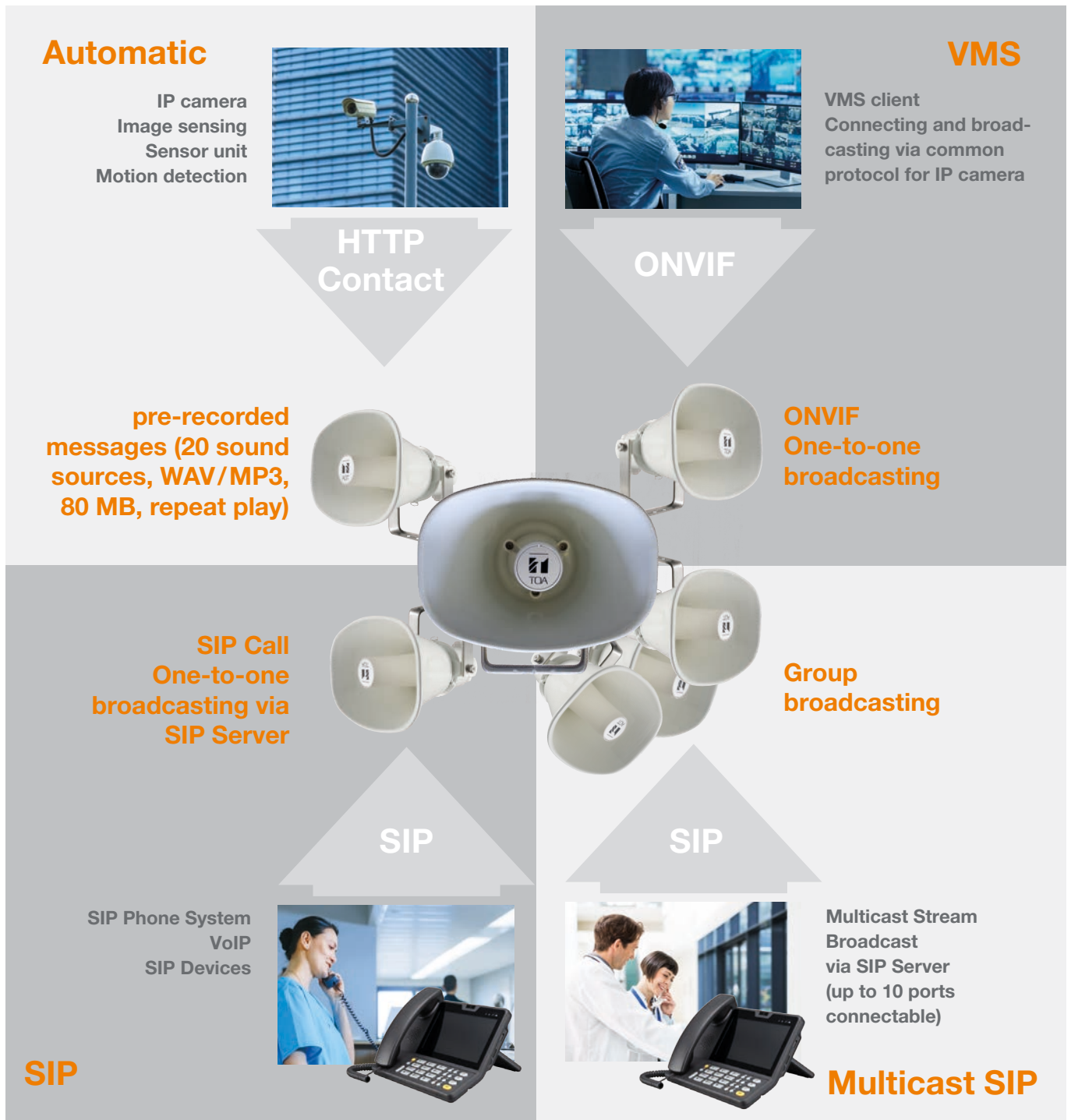


IP-A1SC15

PLUG & BROADCAST: 4 BROADCASTING MODES

Integrate and operate IP-A1SC15 via VMS, motion detection, IP camera, image sensing, SIP Direct Call, SIP

Multicast, VoIP, pre-recorded messages or live speech.



IP horn speaker

HARMONIZED OUTPUT LEVEL FOR EACH DIFFERENT AUDIO SOURCE

Individual volume level adjustment for each audio source to ensure uniform and harmonized output. A uniform output sound level ensures clear and listener-friendly voice announcements with high intelligibility. You can correct individually the input level of your sound sources one by one and set it to a uniform and harmonized output standard.

FLEXIBLE AUDIO PRIORITY MANAGEMENT

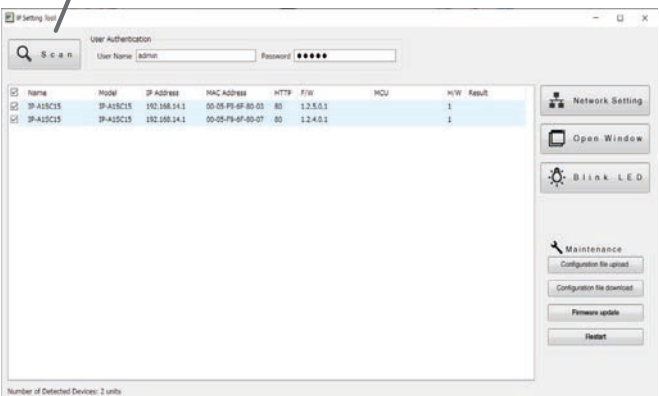
Prioritize network announcement and pre-recorded messages over SIP or common protocols for IP cameras with intuitive browser software. This will allow you to take swift actions in emergency situations.



IP SETTING TOOL

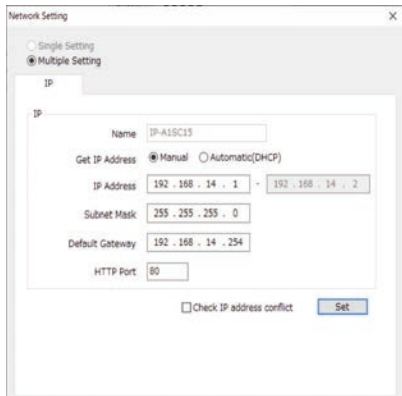
The IP Setting Tool allows you to assign IP addresses to all IP horn speakers at once. Once you set the network ID and host ID for the first one, it will automatically assign IP addresses for the remaining devices one at a time.

Scan and detect IP Horn Speakers



Name	Model	IP Address	MAC Address	HTTP	F/W	MCU	H/W	Result
IP-A15C15	IP-A15C15	192.168.14.1	00-05-F9-8F-80-03	80	1.2.3.0.1		1	
IP-A15C15	IP-A15C15	192.168.14.1	00-05-F9-8F-80-07	80	1.2.4.0.1		1	

Set network ID and host ID



Network Setting

Single Setting
Multiple Setting

IP

Name: IP-A15C15

Get IP Address: Manual Automatic(DHCP)

IP Address: 192.168.14.1 ~ 192.168.14.2

Subnet Mask: 255.255.255.0

Default Gateway: 192.168.14.254

HTTP Port: 80

Check IP address conflict



SPECIFICATIONS

IP-A1SC15	
Power Source	PoE+ (IEEE802.3at Class 4), PoE (IEEE802.3af Class 3)
Power Consumption	22 W (at PoE+ powered, rated output) 13 W (at PoE powered, rated output) 5 W (IEC62368-1)
Amplifier Rated Output	15 W (at PoE+ powered), 8 W (at PoE powered)
Sensitivity	112 dB (1 W, 1 m) (500 Hz - 2.5 kHz, peak level)
Maximum Sound Pressure Level	124 dB (at PoE+ powered, 15 W, 1 m) (500 Hz - 2.5 kHz, peak level) 121 dB (at PoE powered, 8 W, 1 m) (500 Hz - 2.5 kHz, peak level)
Frequency Response	280 Hz - 12.5 kHz
Audio Codec	PCMU (G.711u), PCMA (G.711a), G.722
Broadcasting Mode	SIP Broadcasting Mode: PCMU/PCMA/G.722 Multicast Broadcasting Mode: PCMU/PCMA/G.722, Max.10 ports VMS Broadcasting Mode: Audio Backchannel, PCMU Internal Message Broadcasting Mode Note: Each broadcast mode can be assigned an order of priority using the Priority Setting function.
Internal Messages	Max. 20 messages (Max. recording capacity: 80 MB) Supported file formats WAV file: 8/16/44.1/48 kHz sampling frequency, 8/16 bit, monoaural/stereo MP3 file: 32/44.1/48 kHz sampling frequency, 64 - 320 kbps, CBR/VBR, monoaural/stereo Repeat count: 1 - 10 times Interval time: 0 - 30 sec Trigger: Control Input or Remote API (HTTP)
Network I/F	100BASE-TX, MDI/MDI-X, RJ-45
Network Protocol	TCP/IP, UDP, HTTP, RTP, ARP, ICMP, RTSP, SIP (RFC3261)
Control Input	2 channels, no-voltage make contact inputs, open voltage: 5 V DC, short-circuit current: 2 mA or less, removable terminal block (3 pins)
Control Output	1 channel, open collector output, withstand voltage: 30 V DC, control current: 10 mA or less, removable terminal block (3 pins)
Indicator	LAN LINK/ACT (green), STATUS (orange)
Dust/Water Protection	IP66
Operating Temperature	-30 °C to +55 °C (-22 °F to +131 °F)
Operating Humidity	90 % RH or less (no condensation)
Finish	Horn flare and body: Aluminum, off-white (RAL 9010 equivalent), paint Reflector horn: ABS resin, off-white (RAL 9010 equivalent) Rear cover: PC resin, off-white (RAL 9010 equivalent), paint Bracket, screws and bolts: Stainless steel
Dimensions	222 (W) X 211 (H) X 276 (D) mm (8.74" X 8.31" X 10.87")
Weight	1.4 kg (3.09 lb)
Accessory	Rear cover x1, Removable terminal plug (3 pins) x2
Option	Speaker mount bracket: SP-131, SP-201, SP-301 Pole band: YS-60B

PERSONAL COMPUTER REQUIREMENTS

OS	Windows* 10 Pro (64 bit) Windows* 10 Home (64 bit)
Web Browser	Google Chrome** Microsoft Edge*

* Windows and Microsoft Edge are the registered trademarks of Microsoft Corporation in the United States and other countries.

** Google Chrome is the trademark of Google LLC in the United States and other countries.

Note: Other company names and products are also trademarks of individual companies.